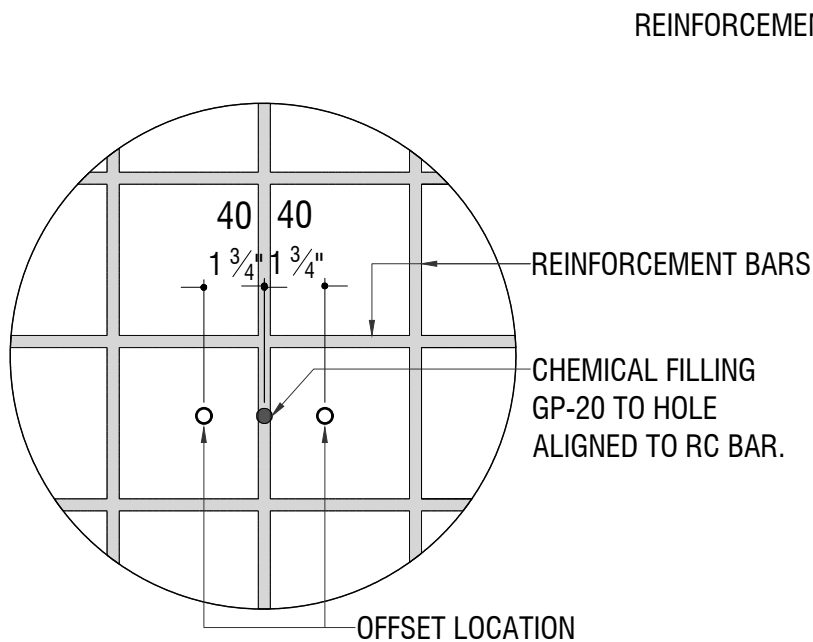


### SECTIONAL VIEW

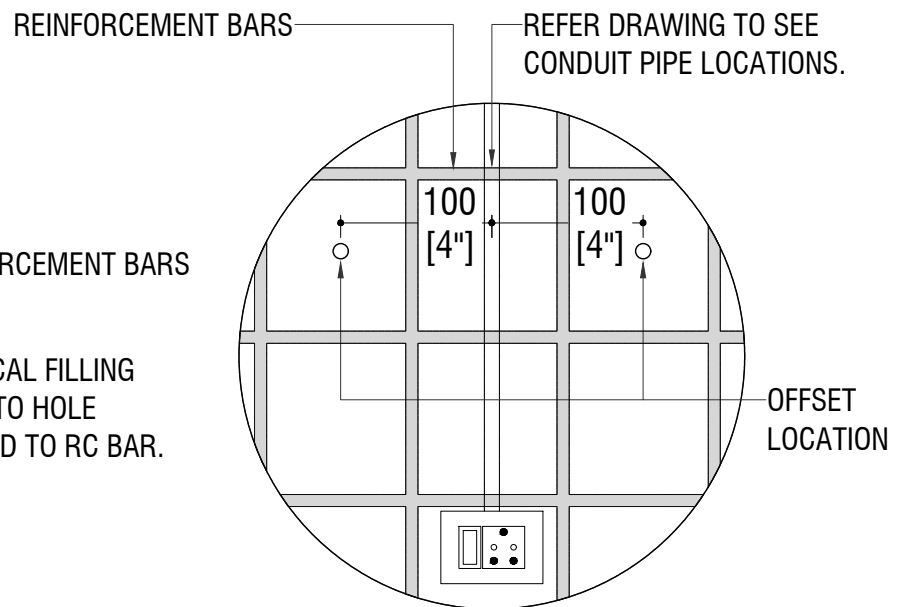
THE MAXIMUM DRILLING DEPTH SHOULD BE 2 INCHES (50 MM). PLEASE REFER TO THE WATER PIPE LINE DRAWINGS TO DETERMINE WHERE THE AC IS TO BE FIXED AGAINST THE TOILET WALL.

### WATER HEATER INSTALLATION METHOD AXONOMETRY



### DRILLING LOCATION ADJUSTMENT

IF THE DRILLING LOCATION ALIGNS WITH A WALL REINFORCEMENT BAR, RE-DRILL WITH A 1 3/4 INCH (40 MM) OFFSET FROM THE ORIGINAL DRILLED LOCATION. IN THIS CASE, FILL THE HOLE THAT ALIGNS WITH THE RC BAR USING GP-20 HIGH STRENGTH NON-SHRINK GROUT.



### DRILLING LOCATION WITH CONDUIT

REFER TO CONDUIT PIPE LOCATION DRAWINGS TO SEE THE WALL AREAS WHICH CANNOT BE DRILLED. (REFER TO ANNEX.) IF THE DRILLING LOCATION ALIGNS WITH A CONDUIT PIPE, THERE SHOULD BE A MINIMUM OF 4 INCHES (100MM) FROM BOTH SIDES OF THE CONDUIT.